

Historic heritage

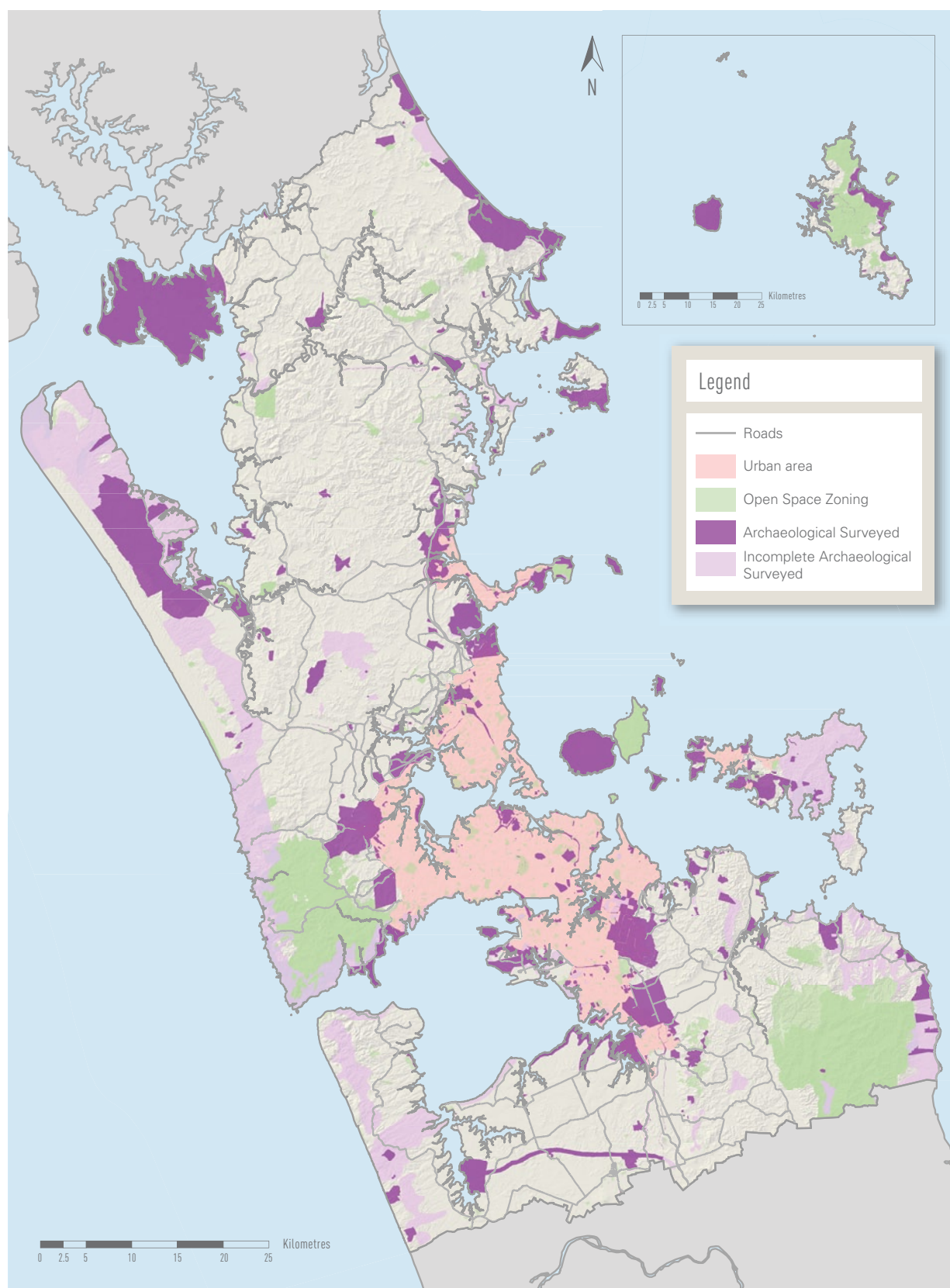


FIGURE 3 Amount and location of land areas surveyed for heritage sites. (Source: ARC CHI).

Historic heritage

Table 1 shows that there were 494 registered items in the Auckland region (about 9 per cent of the 5555 items that are registered nationally) at the end of 2008.

This represents an average annual increase of 2.5 per cent in the total number of registrations over this period.

TABLE 1 Total number and type of NZHPT registrations for the Auckland region in 2008. (Source: NZHPT register).

Council	Registration type and number				
	Historic place	Historic area	Waahi Tapu	Waahi Tapu area	Total
Auckland City	342	10	2	2	356
Franklin District	11	0	0	0	11
Manukau City	41	0	0	0	41
North Shore City	18	0	0	1	19
Papakura District	5	0	0	0	5
Rodney District	51	0	1	1	53
Waitakere City	9	0	0	0	9
Total	477	10	3	4	494

Historic places dominate the types of registrations approved by NZHPT. Figure 5 shows that 96 per cent (477) of all NZHPT registrations are historic places and the vast majority are buildings, structures (including wharves and stone walls) and objects such as memorials. In contrast, ten historic areas in Auckland City make up another 2 per cent of the NZHPT registered items, with three waahi tapu sites and four waahi tapu areas making up the remainder.

This demonstrates the dominance of built heritage on the NZHPT register and, in particular, the identification of individual built items. Recognition of Māori heritage, in the form of waahi tapu sites and waahi tapu areas, and the group value of

heritage buildings, sites and places (provided for by historic area registration) are significantly under-represented.

In accordance with the Historic Places Act, historic places that are registered with the NZHPT are assigned a Category I or Category II rating, depending on their level of significance or value.

- Category I applies to 'places of special or outstanding historical or cultural heritage significance or value'.
- Category II applies to 'places of historical or cultural heritage significance or value'.

Figure 6 shows that the majority of NZHPT registered historic places in the Auckland region have Category II status and just over a quarter have Category I status.

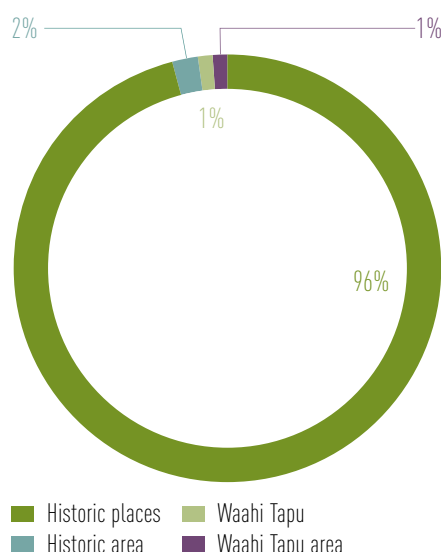


FIGURE 5 Type of NZHPT registrations. (Source: NZHPT).

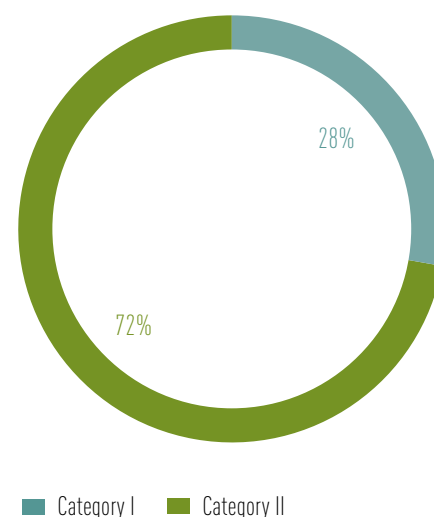


FIGURE 6 NZHPT registered historic places, by category. (Source: NZHPT).

Historic heritage

Indicator 5: Location of NZHPT registered items

A substantial number (356) of all the NZHPT registered items, equating to almost three-quarters (72 per cent), are located in Auckland City (Figure 7 and Figure 8). This is not surprising, as it is the largest city in the country with an extensive built environment.

However, this figure is disproportionately large when compared to Manukau City (the third largest city in the country) which has only 41 (8 per cent) registrations in the Auckland region and to North Shore City (the fourth largest city in the country) which has only 19 (4 per cent). Papakura and Franklin districts have only five and nine registered items respectively.

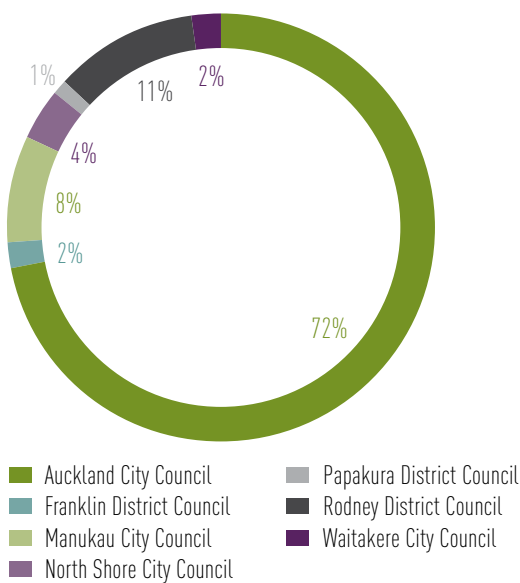


FIGURE 7 Proportion of NZHPT registered heritage items by council. (Source: NZHPT register).

Table 2 shows that most Category I historic places are found in Auckland City, with all other councils far behind in comparison. There are no Category I registrations in Papakura District. Auckland City also has the greatest proportion of Category I historic places (33 per cent) when compared to Category II registrations.

TABLE 2 NZHPT registered historic places, by category and council. (Source: NZHPT register).

Council	Category I	Category II	Proportion of Category I (%)
Auckland City Council	114	228	33
Franklin District Council	2	9	18
Manukau City Council	4	37	10
North Shore City Council	5	13	28
Papakura District Council	0	5	0
Rodney District Council	8	43	16
Waitakere City Council	1	8	11
Total	134	343	

The NZHPT approved 55 registrations in the Auckland region between 2004 and 2008 (Figure 8). Forty-six of these (84 per cent) are located in Auckland City (Figure 9). North Shore City had the next highest number of recent registrations (six) while Franklin District, Rodney District and Waitakere City each had one new registration approved. Manukau City and Papakura District have had no new registrations since 2004.

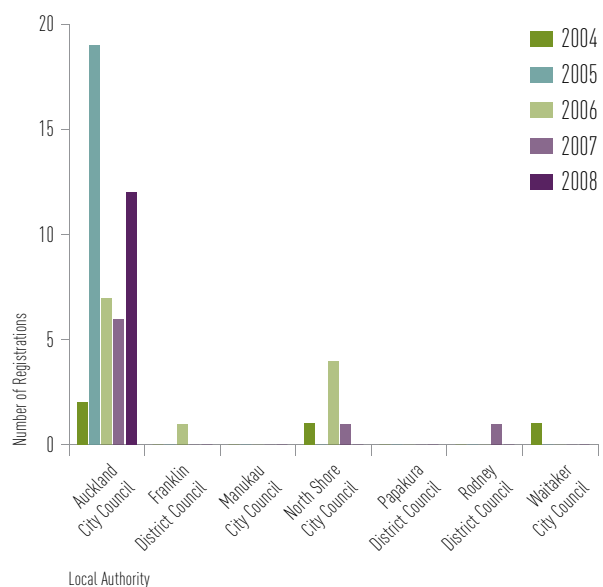


FIGURE 8 New registrations approved by the NZHPT 2004-08. (Source: NZHPT register).

This suggests that the NZHPT has been proactive in identifying historic heritage for registration in Auckland City, possibly due to a greater perceived level of threat from intense development pressure.